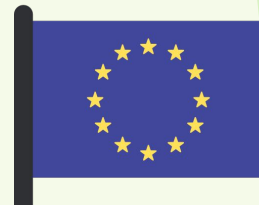
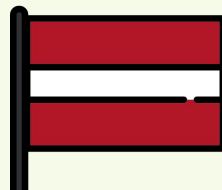




Erasmus Meeting Latvia

from 26/09 to 30/09



PINES

PINUS SYLVESTRIS



MARITIME PINE



PINUS SYLVESTRIS

- SCIENTIFIC NAME: PINUS SYLVESTRIS L.
- FAMILY: PINACEAE
- HEIGHT: 20-30 M



PINUS SYLVESTRIS: HABITAT



HABITAT: IN ITALY FROM THE
PRE-ALPS TO THE ENTIRE ALPINE AREA

PINE NEEDLES, FLOWERS AND CONES



MARITIME PINE

- SCIENTIFIC NAME: PINUS PINASTER
- HEIGHT: UP TO 30 M
- AGE: 200-250 YEARS



MARITIME PINE FLOWER, CONE AND SEEDS



MARITIME PINE: HABITAT



ON THE WESTERN COAST OF
ITALY, ESPECIALLY IN
LIGURIA AND TUSCANY

PRODUCTS MADE FROM PINE TREES



EDIBLE PINE SEEDS



GRANNY'S CAKE



SPAGHETTI WITH PESTO SAUCE



PINE LEAF OIL



PINE SWEETS

PINE NEEDLE TEA

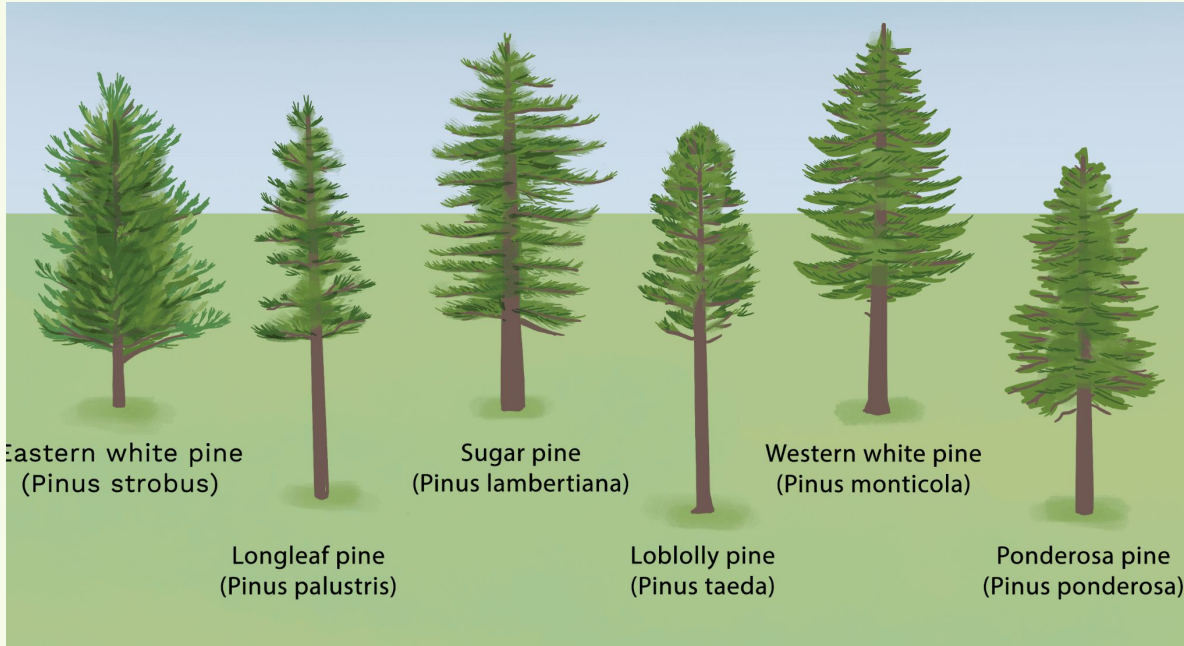


HOW TO MAKE PINE NEEDLE TEA:

- GRAB SOME FRESH OR DRIED PINE NEEDLES,
- BOIL THE WATER IN A POT THEN REMOVE IT FROM THE HEAT,
- ADD THE PINE NEEDLES TO THE HOT WATER,
- STEEP FROM 5 TO 20 MINUTES,
AND LASTLY...ENJOY YOUR TEA!



CURIOSITIES



THE CONSEQUENCES OF CLIMATE CHANGE:

A- THE FIRES

- IN THE SOUTHERN REGIONS
- THE THREE ELEMENTS: SOURCE OF IGNITION, FUEL AND OXYGEN
- LACK OF HUMIDITY
- ARSON AND NEGLIGENT FIRES



THE CONSEQUENCES OF CLIMATE CHANGE:

B- THE STORMS: VAIA

- 26TH-30TH OCTOBER 2018
- REGIONS IN THE NORTH OF ITALY
- THE TWO PARTS
- THE CONSEQUENCES

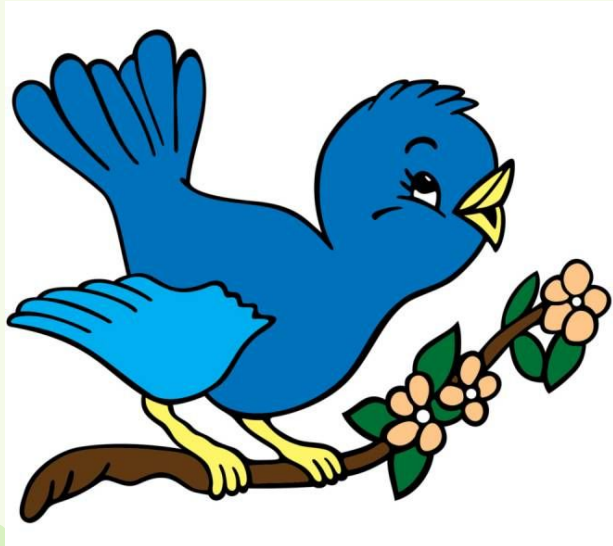


THE BARK BEETLE: A PANDEMIC IN THE FOREST

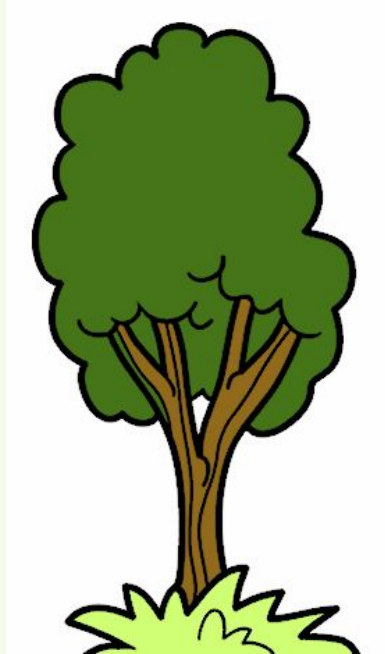
- MOUNTAINS OF TRENTINO AND VENETO
- SCIENTIFIC NAME: *IPS TYPOGRAPHUS*
- YEAR 2021
- NATURAL MECHANISM
- TRAPS



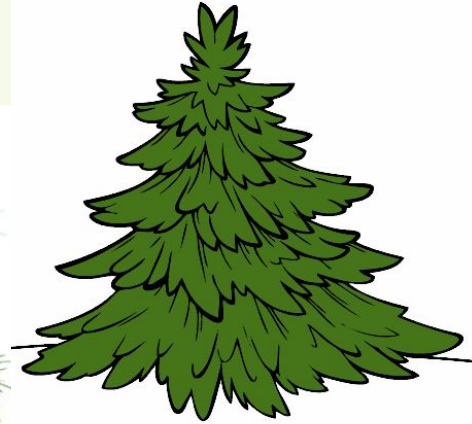
THE TALE OF THE LITTLE BIRD AND THE EVERGREEN TREES



THE LITTLE BIRD



BIRCH TREE



PINE AND
JUNIPER TREES

https://drive.google.com/file/d/1-7ueh7y_nCL0eMQhF_Idk6jRSCS6QRS5/view?usp=sharing



THANKS

for your attention

**Lisa Boccato, Eva Brunelli, Miriam Carlini
and Benedetta Nuvoletto**

